

4 HOCKEY

In the 1930's hockey was very basic. In Lawrencetown and area, it was played on a pond or if you lived in town, there would be a smooth ice surface with a board fence around it. If you skated on a pond, you made a fire at night and some ice surfaces had electrical lights strung overhead.



The equipment was simple as well. You could buy a pair of skates from the catalogue for two dollars. The rest of your equipment was generally homemade. The only two hockey sweaters from the mail order were the blue and white Toronto Maple Leafs or the red, white and blue Montreal Canadians.

If you were lucky enough to have a radio, you could listen to Foster Hewitt broadcast Hockey Night in Canada from the Maple Leaf Gardens on a Saturday night.

As early as 1925, some of the Lawrencetown and Clarence boys were playing hockey in Middleton for the Middleton Maple Leafs. Reg and Arthur Barteaux lived in Clarence but went to Middleton School and played on the strong Maple Leaf teams. When there was not a Lawrencetown school team Ron Shaffner, Gordon Shaffner and Bill Foster also played with Middleton.

Lawrencetown School Team 1930 -31



BACK ROW: TED HOWLETT, GORDON SHAFFNER, COACH CASEY JONES, HENRY CROWELL, BILL FOSTER

FRONT ROW: CLYDE BEALS, BARRY "BUCK" RUMSEY, DON HILLS. *MASCOT:* BOB HOWLETT

In the more formal poses in these pictures Coach Jones has his glasses off, as seen above. Also, notice the "beanies" the players are wearing. They must have been a forerunner to the famous "hockey helmet". Players are not wearing "blade guards" on their skates, probably because there was no such thing.

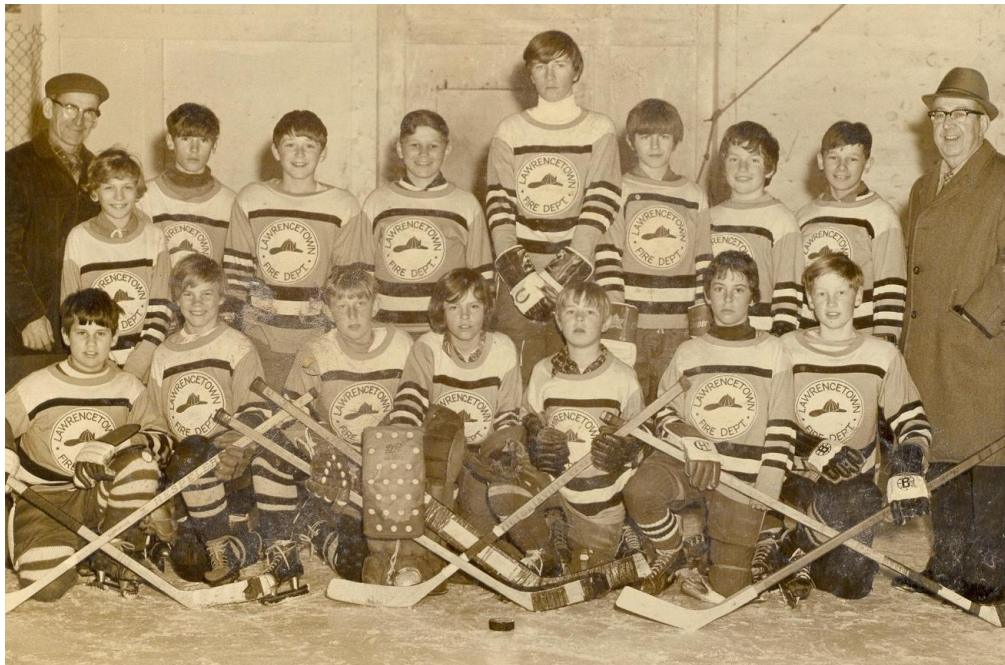
1930-1931



BACK ROW: TED HOWLETT, CASEY JONES, HENRY CROWELL.

FRONT ROW: DON HILLS, GORDON SHAFFNER, BUCK RUMSEY, BILL FOSTER, CLYDE "PA" BEALS

Gordon Shaffner continued his love of the game and passed on some of his skills and coached well into the 1970's.



BACK ROW: RON BARRETT (COACH), ERNIE BARRETT, JOEY BEALS, BUTCH JOHNSON, PAUL THOMAS, ALAN JACKSON, ALAN BENT, JIM JOHNSON, GORDON SHAFFNER (COACH)

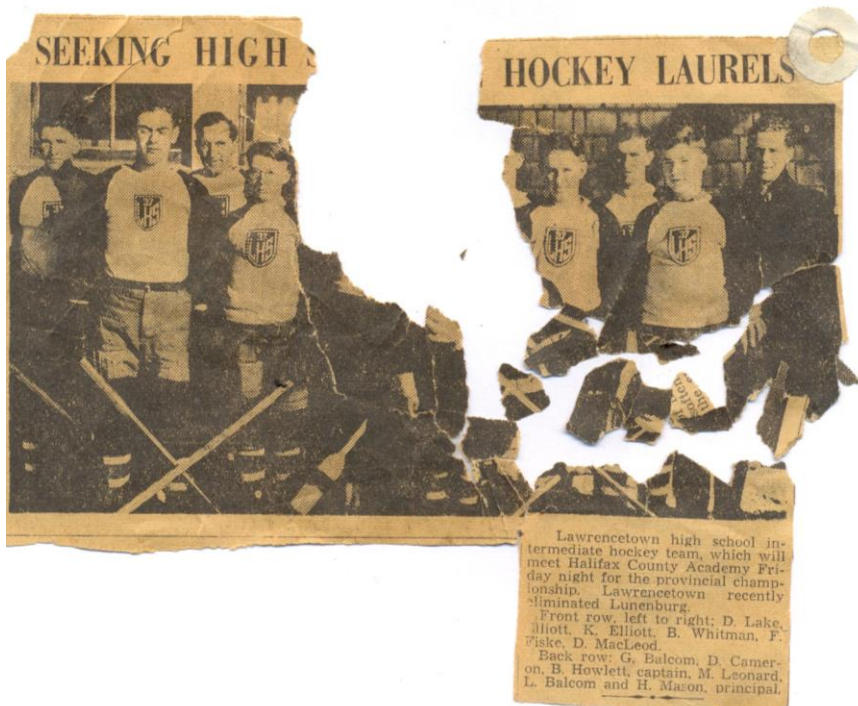
FRONT ROW: BRICE MCNEIL, NORM BALCOMBE, LEROY WOOD, KIM CONNELL, BRUCE CONNELL, RICK HAMILTON, MARK HUNTER

The Clarence rink was constructed in 1933 and provided ice-skating and hockey for the people of the area. Built just south of the Clarence Road there was a constant water supply coming off the North Mountain. This was perhaps the reason why so many good hockey players came from Clarence.



I received this newspaper clipping below from Mary Gillis who lives in Middleton. Her husband Don Gillis and his brother Ivan played for Lawrencetown High School. Even though the clipping came in pieces in a plastic bag, the memories were still in tact. I have learned, through my research, what people hold dear.

It's the thought that counts and we must hold on to our heritage, no matter how big or how small or the condition. *Thank you, Mary!*



Mary's clipping on the left shows the Lawrencetown team after they defeated Lunenburg. The strong Lawrencetown team then played Halifax County Academy in a two game total point series for the Provincial title. The boys lost the first game in Halifax and only managed to tie their city rivals in Bridgetown in game two.

Valley School Hockey Teams Battle To Draw

Lawrencetown School Wins Hockey Contest

LAWRENCETOWN, Feb. 24 — The Lawrencetown High School hockey team was defeated for the first time since the opening of the lower Valley High School League, Middleton winning by a 6-4 count. The game was a good exhibition of high school hockey from start to finish. The visitors scored four goals in the first period and only the clever work of Johnny Dodge between the posts allowed the Middleton team to maintain their two-goal margin in the last period.

The pick of the visitors was John Redden, who scored one goal unassisted and two on passes from Gerald Phinney, and Arnold Blynn who scored two goals on passes from

Gerald Phinney. The honors of the home team were carried off by Robert Howlett who scored two goals, while Donald Fiske and Claude Elliott each scored one. Louis Longley played a good game on defence.

Lawrencetown—Goal, Kenneth Elliott; defence, Louis Longley, Claude Elliott; forwards, Fred Fiske, Donald Fiske, Ivan Gillis, Bob Howlett, Dan MacLeod, Glen Johnson.

Middleton—Goal, Johnny Dodge; defence, Charlie Redden, Gerald Ray, Vernon Phinney; forwards, Gerald Phinney, John Redden, Arnold Blynn, Bobby Marshall, Harry Potter, Don Banks.

Referee—Walter Hills.

MIDDLETON, Feb. 17—In a regular high school league fixture played here Saturday evening, the Middleton High School Imperials held the Lawrencetown High School to a 2-all draw.

Arnold Blynn taking a pass from John Redden opened the scoring in the first period, giving the Imperials a one goal lead about midway in the period. D. Fiske put Lawrencetown on even terms, scoring unassisted from a close in shot.

The second frame saw both teams fighting hard to cage the extra marker. The Imperials missed a number of scoring chances by not being able to place their shots and were held scoreless during the period. Near the end of the period J. Gillis, taking a pass from F. Fiske, dented the twine behind J. Dodge to give Lawrencetown High a one-goal margin.

DEFENSIVE HOCKEY.

In the third period Lawrencetown played defensive hockey to protect their one goal lead. With about five minutes to go a Lawrencetown player was penalized and Middleton put five forwards on which netted them the tying goal, which was scored off the stick of John Redden from a mix-up in front of the net.

The young players put up a good brand of hockey and a number of them show promise of developing into clever players. Johnnie Dodge and K. Elliott, opposing net guardians, made a number of hard saves. Vernon Phinney, C. Redden, Arnold Blynn and John Redden were outstanding for the Imperials, while F. Fiske, D. Fiske and J. Gillis played a nice game for Lawrencetown.

Lawrencetown having played four games has a total of seven points and is sure of a play-off berth. Middleton has played only two games and has three points to their credit.

Lawrencetown — Goal, K. Elliott; defence, C. Elliott, L. Longley; forwards, F. Fiske, D. Fiske, J. Gillis, B. Howlett, G. Johnson, D. McLeod, V. DeLancey.

Middleton — Goal, J. Dodge; defence, C. Redden, V. Phinney, G. Ray; forwards, A. Blynn, C. Bruce, H. Potter, D. Banks, G. Chipkan, J. Redden.

IN NEW LEAGUE

In tonight's game, the Annapolis Academy team played their first home game in the newly formed Central Valley High School League. This league is made up of teams from Middleton, Lawrencetown, Bridgetown and Annapolis Royal. Lawrencetown were their opponents tonight and after a hard contest the visitors took the game 5-2. The teams were about evenly matched, as was evident in the first period, neither one scoring.

In the opening moments of play in the second Howlett made the first score for Lawrencetown on a close play. They held their lead for about ten minutes and then Stevens evened the score when he beat the Lawrencetown goal on a long shot. Just before the bell Fortier put the home team one up when he scored on Hamm's assist.

Lawrencetown put on the pressure in the third, and in spite of Mill's fine work in the Annapolis net, they scored four times and allowed the home team none. D. Fiske scored first unassisted and then gave Gillis an assist for another goal. Howlett scored again on a solo play and then Fiske got the final goal on Gillis assist.

LAWRENCETOWN—Goal, K. Elliott; defence, C. Elliott, L. Longley, V. DeLancey; forwards, F. Fiske, D. Fiske, J. Gillis, B. Howlett, D. McLeod, G. Johnson.

ANNAPOLIS ROYAL—Goal, R. Mills; defence, D. Stevens, B. Goldsmith, M. Spurr; forwards, A. Hoyt, H. How, B. Cummings, G. Hamm, B. Wood, T. Fortier.

Referees—Bob Riley and Bruce Crowe.

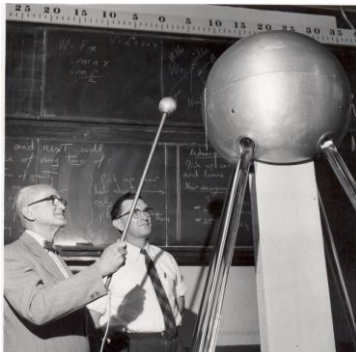
Lawrencetown Hockey Team 1937



BACK ROW: MARK LEONARD, ROBERT HOWLETT, DICK CAMERON, COACH: HAROLD NASON

FRONT ROW: **LORRIS BALCOM**, DONALD FISKE, DON MACLEOD, KEN ELLIOTT, EDWIN ELLIOTT, GORDON BALCOM, FRED FISKE

MASCOT: BUD WHITMAN



Left: (l-r) Dr. Guy E. Grantham, physics professor, Cornell University; Mr. Lorris Balcom, Arvida, Quebec.

Lorris Balcom was born August 29, 1919 and raised in Paradise. He completed grade eleven at the Paradise School and did his grade twelve at Lawrencetown High School. He played on the high school hockey team in 1937. In 1938, he was granted a Teacher's Diploma from the Normal College in Truro. After attending several summer schools at Acadia and one year living in residence there in 1950, he earned a Science degree with a major in Mathematics, and minors in Physics and Chemistry. In 1957, Lorris was one of three outstanding high school teachers from Eastern Canada selected to attend a six-week Merit Fellowship seminar at Cornell University, New York City. At the time Lorris was Vice-Principal and science teacher at Arvida High School, Quebec. After retirement, Lorris and his wife Rita (Beals) returned to the Valley and lived in Middleton where he passed away a few years ago.

Lorris and his brother Gordon played on the same team in 1937. Gordon was serving in the Air Force when he was killed overseas. Gordon's daughter, Anne Marie Pearle lives in Paradise.

Valley High School League

Lawrencetown played in the Valley High School League for many years. This league consisted of teams from Middleton, Bridgetown and Annapolis. We can see from the hardware in some of these pictures, Lawrencetown High School was a very successful team, winning the League five years in a row during the thirties. These teams played for the Eisner Cup, probably donated by Mr. Orland Arthur Eisner, a merchant in Lawrencetown at the time. Mr. Eisner, better known as O. H. Eisner, had three sons, Ken, Raleigh and Shirley. Shirley drowned at a young age and it is possible the hockey trophy was donated in his memory.

It was in the year 1934 when Doreen Shaffner and her friends went for a skate at the outdoor rink at the Exhibition Grounds. It was customary in those days that if a boy offered to “tie-up” your skates, he would get the first skate with you.

There was a changing room in a building close to the Demonstration Building where skaters would don their blades. The ice surface was slightly to the east and behind the main Demonstration Building.



The High School played their hockey games here as well. As the puck was dropped and Edwin Elliott hooked it back to Fred Fiske, one might have heard Doreen and her classmates yell from the sidelines:

*The L, the L, the LHS
They are, they are, they are the best!
Who are, who are, well I guess.
Lawrencetown High School, yes, yes, yes!*

When the action got intense, and when as Lorris Balcom made a great pass to Don Fiske or Ken Elliott pulled off a great save, the girls yelled:

*Shinny up a tin can, shinny up a tree,
Lawrencetown High School, yes sir-e-e-e-e!*

However, when the action slowed or the boys got behind they were inspired when they heard: *When you're up, you're up, When you're down, you're down, When you're half way up the hill, you're neither up nor down!*



It was mid-hockey season in 1935 when Dale Balcom Bishop and Doreen Shaffner Hartley decided it would be a good idea to go down to the basement of the High School and try on some of the boys' hockey gear, which was in storage. As Doreen was telling me this story in 2006, the one thing she remembered the most was the "horrible smell of that hockey stuff." However, they thought it necessary to suit up, complete with skates, come up the stairs and parade on the front steps of the school to the smiles and giggles of onlookers.

The school team played in Middleton, Bridgetown, Annapolis Royal, and even Clarence. Late in the 1935 season, they traveled to Lunenburg for a game. As with basketball, there was usually a banquet given after the game in honour of the visiting team. Six or seven of the Lawrencetown girls made the trip to Lunenburg to support their boys. After the festivities and the banquet, the girls socialized before making the trip back to the Valley by casually walking through the streets of Lunenburg with some of the local boys. This did not sit well with the Lawrencetown Hockey Team. It was very evident the next day in school that the girls' "disloyalty" was not appreciated. I understand from that brief encounter, several years of letter writing ensued and friendships blossomed and were maintained.

LAWRENCETOWN HIGH SCHOOL HOCKEY TEAM 1938-39



BACK ROW: JACK STILLWELL, EDWIN ELLIOTT, FRED FISKE, LEON FISKE, VANCE JACKSON
FRONT ROW: COACH: HAROLD NASON, RUSSELL EWING, BUD WHITMAN, ROLLY NASON, GLEN JOHNSON, DAN MACLEOD, ROY MERRY **MASCOT:** HAROLD "NASSIE" NASON JR.

In 1938, Thelma Whitman Collicott used to skate on the rink at the end of Prince Street across the tracks. It was here that Ethel Shaffner would always ask Thelma to skate with her for a couple of times around the rink. This was before Miss Shaffner began to teach at the school. It was on a Sunday night on their way home after skating when Thelma and her friends saw the Baptist Church on fire.

Vance Jackson remembered playing hockey on the little outdoor rink at the end of where Prince Street is now. It was just north of the railway tracks past Dr. Frank Morse's office. He played on the teams coached by Harold Nason. The high school team practiced on this outdoor rink and hosted Annapolis High School during the 1938-1939 season.

The high school boys, with Nason's guidance, built this rink. They used a water supply from the old evaporator which was across the railway tracks and slightly west. The boys had to dig under these rails in order to lay the pipeline. The evaporator burned in the fall of 1936 but the rink kept on using the underground water supply. Sometime in the early 1950's, this first rink building burned down. The changing building was immediately rebuilt but was much smaller than the first. As a youngster and a teen in the late 1950's, I can remember the pipe protruding out of the snow-covered ground. It was always shrouded by huge ice crystals because it always ran during cold weather to prevent freeze up. They just attached a hose to it to "flood" the ice surface.



Left: This is a picture, taken in March 2007, of where the old rink used to be. We were standing on the corner of the Prince Street extension and the former railway corridor, to the east.

This area was once Dr. L. R. Morse's orchard. The old change house would be in the middle of this road and the "water pipe" would be directly in the middle of the picture.

I remember skating and playing hockey here in the late fifties. There was no school hockey team then, so we merely picked teams and played 'til we got tired. On Saturday mornings, by the time you scraped the ice and played a couple of hours of hockey, even the young bodies got tired ... then you had to walk home to Paradise.

The change house was about twenty feet by twenty feet with a big ol' wood stove in the middle. There was a woodshed attached to the north end of the building. There were lots of good times here, for in the wintertime this was the place to "hang out". You didn't have to skate or play hockey; you sometimes just dropped in to say hello. It was here at this rink on a chilly February 3rd, 1959 that someone came through the door with

the tragic news of the death of Buddy Holly. It was probably the 4th or 5th by the time we got the news in Lawrencetown. But it was a great loss to us rock 'n' rollers in town. Of the three singers that were killed in that small plane crash, Buddy Holly, J.P. (The Big Bopper) Richardson and Richie Valens, Buddy was my favorite. In fact, my first record ever was Buddy Holly's "*That'll Be The Day*" purchased at Ditmars and McNeil, Middleton. As Don MacLean would sing in the lyrics of "*Bye, Bye Miss American Pie*" years later, "this would be the day, the music died."

Although our hockey here was somewhat disorganized, somebody eventually grouped us together and thought we should play some kids our age in Bridgetown. The memory is sketchy but it was probably 1958 or '59 and our coach would have been a Fiske. All my skating and hockey was done on field ponds and at the Lawrencetown Rink. I had only seen the Bridgetown Rink from the outside and it even had a roof over the ice. The only thing I remember about the game is me skating down the right wing and looking at this gigantic roof over the ice surface, thinking that they would never have to shovel snow every Saturday morning. Then "BANG", I got checked! It set me on my butt and quickly reminded me where I really was.

The old High School League consisted of teams from Lawrencetown, Bridgetown, Middleton and Annapolis. The names Bob Durling and Lloyd Naugler stand out as former managers of the "old rink across the track".

Vance remembered getting a new pair of skates from Simpson's in 1938 for the sum of \$4.75, which he still has. The school only had eight to ten players at the best of times. Vance recalled that Don McLeod was a very good hockey player. He was the son of the Johnson who owned and operated the store where the Pharmasave is now.

Vance used to go out with Joyce Daniels, whose father was Clarence Daniels. Sometimes Vance would go to her place for supper either before practice or a game instead of making the long trip to Clarence. However, it was still quite a walk to her house as it was over on the present day Highway 201.

The high school teams were generally driven to the games by car. There was always someone who would volunteer their vehicle and time. Vic Whitman made a lot of trips. Of course Vic's son Bud was on the team.

In 1939, Lawrencetown High School won top honours in the Valley High School Hockey League. As a reward for their achievement coach Nason arranged a game in Wolfville to show off his Valley champions. They even picked up a player from Middleton. As Vance says, "I think we lost 'cause the rink was too damned big!"

In 1990, Vance had those same \$4.75 skates sharpened and skated on a pond in Clarence with them. In 2001, he took the same skates to the rink in Bridgetown. But when he got there, he decided there were just too many kids on the ice for him to risk a fall. At a young eighty-three, and with his sixty-two year old skates, he might still take up the challenge when the time is right.



Fred Fiske was not only a tremendous athlete but he gave back to his community so much that a description would fill the remainder of this book. He played hockey with his two brothers Don and Leon for Lawrencetown High School when the team dominated the Valley League. He and Leon also played for the Bridgetown Hawks in their glory years as well.

Fred also played fastball in Bridgetown. In 1944, his fastball team lost in the Provincial Championship game to Trenton. Fred, Leon and their father Raymond coached me in Little League Baseball in the fifties when the ball field was at the Exhibition Grounds. Fred also coached high school hockey in Lawrencetown.

Fred and his wife Ella have moved from Lawrencetown and are now living in the Bridgewater area. Fred is always willing to tell a story and end it with that smile of his. He always has a way of telling a story to make it extra special.

Leon Fiske, like his brothers Don and Fred, played for the strong Lawrencetown High School teams in the 1930's. Leon was a longtime supporter of sports in town, particularly hockey. When I was going to school at the junior high level, some of us used to hang out in Leon's garage. It was here Leon showed us some of the finer points in the art of boxing. I can remember the gloves being so big and heavy that no one really got a good poke in, but it sure was a lot of fun. We sparred amid all the horse harness and exhibition ribbons that hung from the walls and ceiling.

Fred and Leon played for Berwick in 1943 to 1945 when the team became the Maritime Intermediate Hockey Champs.

Leon shared his love and experience of the game when he took on a local coaching role in 1972 and then coached the Lawrencetown High School team in 1975 – 76.



Bridgetown Hawks – Leon, Fred and Matt Pembleton

The picture below is the team of 1952-'53. In 1953-'54, the Bridgetown Hawks were the Nova Scotia Intermediate champions.



In 1970, Albert Smith, Fred Fiske, Leon Fiske and Edwin Elliott came to the realization that it was time for Lawrencetown to have a covered rink. These men had skated and played their hockey on outdoor ice surfaces most of their lives and wanted the youth of the area to enjoy the benefits of an indoor facility. Within weeks, a committee decided this new facility would be built on the



Exhibition Grounds. By August of the same year, the new Youth Arena was ready for use. The end product was the result of many hours of volunteer help from the community and surrounding area. Through government grants and more volunteer work, the ice plant was put into place in 1971.

LAWRENCETOWN OLDTIMERS 1970-71



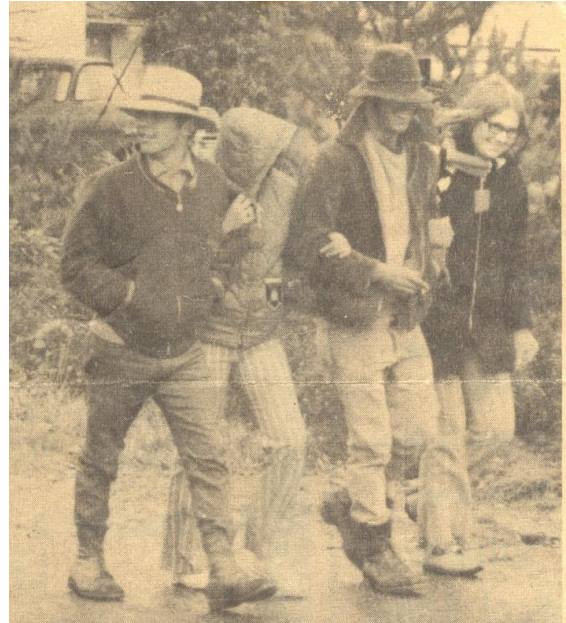
BACK ROW: Stan Walker (Port Lorne), Lawrence Walker (Clarence), Leland Cox (Mount Hanley), Bill Gesner (Lawrencetown), Brian Shaw (Clarence), Albert Smith (Brickton)

FRONT ROW: Allan Graves (Port Lorne), Bill Wood (Port Lorne), Ron Barrett (Clarence), Matt Pembleton (Lawrencetown), Gerret Faber (Brickton), Frank Longley (Lawrencetown), Ron Lister (Lawrencetown)



Left: Ron Barrett practicing his hockey skills on the Clarence Road in 1940.

**Walk-A
-Thon
raised
\$ 1,263**



Right: Charlie Whitman, Karen Smith, Hank Durland and Heather Hudgins taking part in a Walk-A-Thon in 1971 to raise money for the Youth Arena.

Figure skating became very popular during the early days of this new indoor arena and every year an “ice show” ended the season. In the 1980’s, our girls, Lori and Cathy participated in these events and Paulette and I loved to watch. Figure skating continues to be a popular recreational activity at the rink.

Many enjoyed free skating, for young and old. There was also “school days” when students from the Elementary and High School came to the rink for a skate. There was also the odd hockey game between staff and students that always provided entertainment for people in the stands.

It takes many volunteers to run a rink and manage it properly. The rink managers over the years have been very faithful and dedicated. I can remember Bob Durling from the old outdoor rink at the end of Prince Street and how hard he worked at keeping the ice in shape for us kids to skate and play hockey. Bob and Freddie Banks were the first so-called “managers” of the Youth Arena in 1970-71. Bob was always there, over the years, until the end of the 1975-76 season. During those years Vance Wood, Fred Banks, Dave Spears, Donnie Crowell and Arnold Wood assisted him.

In the 1980’s, it was Floyd and Jean Lewis who kept the rink running.

In the off season, the Youth Arena has provided space for ball hockey, dances, lacrosse and many other community, county and provincial activities. In August, the building becomes the commercial centre for the Annapolis Valley Exhibition.

The Leon Fiske coached Lawrencetown Rep Team, 1972



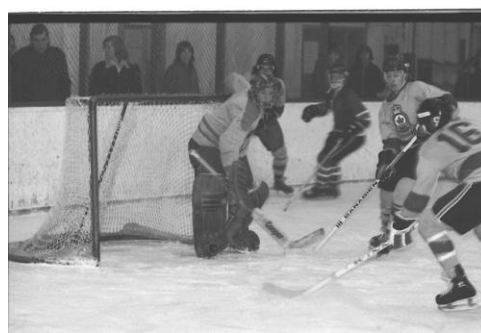
BACK ROW: BRUCE KEDDY, KRIS LARSEN, KEVIN LONG, LEON FISKE (COACH), EDMUND SLAUENWHITE, MIKE VEINOT, DAVID BISHOP

FRONT ROW: GEORGE JACKSON, BRIAN “FUZZY” CONNELL, RANDY O’NEIL, BARRY CONNELL, JOHN BARRETT

The LCS Flyers,
coached by Claude Lowe and Dawson Farrington.

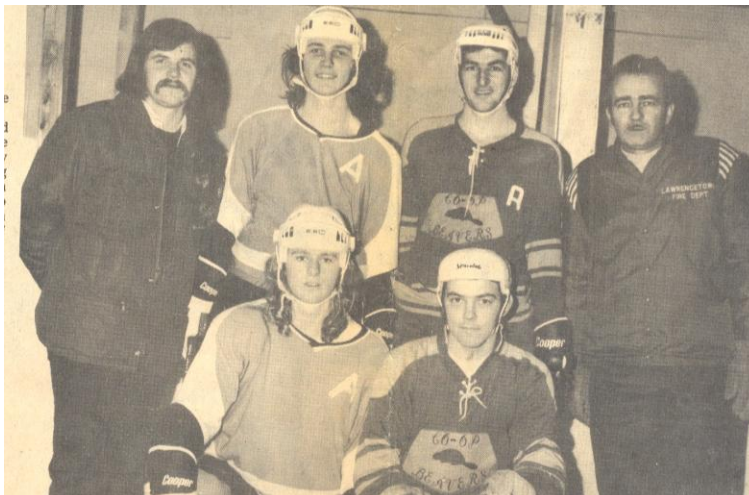


Below: The Flyers in action. Dec. 26, 1974 vs. St. James Regional High School from Newfoundland



In December of 1974, the strong St. James Regional High School hockey team from Port aux Basques arrived in the Valley to play some of the schools in the area. Dave Spears, who is married to Lynn Bent, a Lawrencetown graduate, coached the Provincial winning team. Lynn is the daughter of Perley and Shirley Bent and a brother to Brian, one of our former Wednesday night Legends basketballers.

The team ended their visit by playing an all-star team from the Lawrencetown Suburban League. The picture below shows the two coaches and two players from each team.



BACK ROW: DAVE SPEARS(COACH, NL), KEVIN PARSONS (NL), GARNET VEINOT(L), ED HAMILTON (COACH, L)

FRONT ROW: RICHARD PARSONS(NL), CHARLIE WHITMAN(L)

The Lawrencetown Hornets, one of the teams in the Suburban League.
1974



BACK ROW: MIKE VEINOT, RAY SPENCER, HANK DURLAND, RON RUGGLES, REG GAUL, BRIAN CONNELL, KEVIN LONG, ED HAMILTON (COACH)

FRONT ROW: BRUCE KEDDY, KRIS LARSEN, CHARLIE WHITMAN, DANNY LISTER

Lawrencetown Consolidated School Flyers
Winners of the Lawrencetown and District League



BACK ROW: LEON FISKE (COACH), BRIAN CONNELL, KEVIN POOLE, JOEY BEALS, STEPHEN LOWE, JACK VANROESTEL, JIMMY MACGREGOR, BRUCE MACGREGOR (CAPTAIN)

FRONT ROW: RUSSELL HEBB, ANDY LOWE, ERNIE BARRETT, KRIS LARSEN, TIM D'AUBIN, RICKY CLAYTON

“Flyers win Regionals, advance to Provincials” ...taken from the CONTACT, the Lawrencetown High School news, sports and social events report, April, 1976.

On Saturday, March 20 and Sunday March 21, the Flyers hosted Lockport in Regional High School hockey. The first game played on Saturday resulted in a 15-6 win for the Flyers. On Sunday the Flyers once again trounced Lockeport 14-3. The Flyers then advanced to the Provincial “C” hockey championships in Trenton last weekend. Besides Lawrencetown and Trenton, the other teams were Antigonish and Port Hood.

On Friday, March 26 the Flyers played Antigonish East, but were soundly beaten 9-2. Goals were scored by Andy Lowe and Bruce MacGregor. The second game saw Trenton defeat Port Hood.

In the consolidation game, played on Saturday March 27, the Flyers once more found the going rough and were defeated by Port Hood 9-0.

The championship game between Trenton and Antigonish East was won by Trenton by a score of 7-3.

The Leon Fiske coached 1979-'80 LAWRENCETOWN LANCERS



BACK ROW: JEFF FISKE, ADRIEN VANROESTEL, KEITH VEINOTT, JIMMY MACGREGOR, KEVIN VEINOTT, TONY LOWE, ALLAN MACGREGOR, LEON FISKE (COACH)

FRONT ROW: FRANK LONGLEY, DAVE RAINS, KEVIN HEIGHT, TONY GENDREAU, MARK SLAUENWHITE.

Absent from the picture are Darald Lewis, Jeff Thompson and the manager Mr. Rick Mosher. In 1980, Leon coached the high school boys to a consolation trophy in the Provincial finals in Lunenburg.

1982 LAWRENCETOWN HIGH SCHOOL LANCERS



BACK ROW: JEFF GUSHUE, DALE SHAW, CRAIG O'NEIL, SHAWN LEONARD, STEVE MOORE

MIDDLE ROW: JIM GUSHUE, JEFF SHEARER, KEITH VIENOTT, CHRIS THOMPSON, SCOTT BISHOP, CHRIS LEONARD

FRONT ROW: BLAIR PORTER (MANAGER), GRAHAM PARKER, RONNIE WHITE, KEVIN VEINOTT, DARALD LEWIS, LONNIE WHITMAN, **BRUCE ROSS** (COACH)

This strong Lawrencetown team defeated Kings Edgehill and Lockport in Regional play, enabling the boys to advance to the Provincial finals. In their first game of the provincial round, a strong Inverness team, the reigning Provincial champion edged them out. The next day the Lancers knocked off a determined Trenton team to win the Mainland Championship by a score of 4-3.

This was the last year the high school iced a hockey team.

Bruce Ross took over the Physical Educational Department from Dawson Farrington in 1981. Lawrencetown Junior/Senior High was Bruce's first school. The academic year of '85-'86 saw Bruce at Central Michigan University taking his Masters in Education. During his leave, the school yearbook *The Observer*, was dedicated to him. Bill Peppard filled in for Bruce that year. While at Central Michigan, Bruce was the grad-assistant coach of the Chippawas, the University Baseball Team. The batting coach that year was Tom Tresh, a former roommate of Mickey Mantle. Tresh was the American League rookie of the year in 1962.

Bruce returned to Lawrencetown in September of 1986 and when our High School closed in 1992 and merged with Bridgetown, Bruce took over the Phys. Ed. position there. Bruce coached the 1993 Canada Games Baseball Team in Kamloops,

British Columbia. He was also a scout for the New York Yankees from 1988 until 1995. In 1996, Bruce Ross transferred to Evangeline Middle School in New Minas. Beginning in 2006, he took over the principalship of that school. He, and his wife Heather and daughter Lindsay, live in Port Williams.

It is rather ironic, that where Bruce and Heather built their new home on a hill overlooking the Port is on the land that was once owned by my wife Paulette's grandfather, Norman Chase. Paulette used to walk and play in these fields that are now subdivisions. Norman, like Bruce, coached hockey. He coached The Ports, who played in the old Valley League in the 1930's. Paulette's dad, Bill, played on this team. He is pictured in the front row, to the left.

The Ports of Port Williams, 1936.



BACK ROW: (L-R): NORMAN CHASE (MANAGER), AVERY BEZANSON, IVAN BEZANSON, WILLIAM PARKER, GEORGE DAKIN, TED BURNS, DON OGILVIE, IRVING GATES (PRESIDENT)

SECOND ROW: (L-R): GERALD GATES, GEORGE BRISCOE, CLARENCE FORSYTHE, W. ROGERS, PETE PORTER

FRONT ROW: (L-R): WILLIAM (BILL) CHASE AND LLOYD MARTIN

Lawrencetown Paradise Bridgetown Connection

Although Lawrencetown didn't have a school team, many of the younger students played on the Bridgetown/Lawrencetown rep teams. Below is a picture of the Atom "C" team from 1984-1985.



BACK ROW: NATHAN MAGARVEY, STEVEN BROWN, CARMEN BARTEAUX, SHAWN TUPPER, BRETT CROMWELL, STEVEN ILLSLEY(L), PETER TODD, TREVOR WOOD(L)
FRONT ROW: TIMMY BENT, KEVIN WOODBURY, GREG LEONARD, **PETER PRICE**, SEAN O'NEILL(L), AARON ASCOTT(L), GLENN WHITMAN(L)
COACH: CHARLIE WHITMAN (L) *MANAGER:* JIM PRICE

1988-1989 BANTAM HAWKS



BACK ROW: CARMEN BARTEAUX, **PETER PRICE**, SEAN O'NEILL (L), RICKY MOSHER (L), RICKY HARRIS, IAN STEELE, JASON LAWTON
FRONT ROW: BRIAN BURGESS (L), BRUCE BISHOP (L), BOBBY BENT, RANDY SHERIDAN, LEIGH DURLAND (L), MIKE JACKSON (L), GREG LEONARD

My oldest daughter Lori and **Peter Price** were married on July 16, 2005 in Paradise.

Bridgetown Regional High School

In 2003, the Bridgetown Hockey Trojans won the Division Three Provincial championship. This was the first time in the school's fifty-year history that its hockey team had brought home a Provincial banner. Two members of the team were female, Megan Verran and Samantha Burrell. Dale Balcom Bishop and Doreen Shaffner Hartley (page 38) would be very proud.

The coaching staff and management were from Lawrencetown and Paradise.



BACK ROW: TRAINER BRUCE GILLIS (P), CURTIS HODGE (B), KORY TAYLOR(L), JOSH HARRIS(B), JEFF SILVER(L) RYAN LUKNOWSKI(M) SAMANTHA BURRELL(B), KYLE SILVER(L), RYAN BOYD(L), ALEX BALCOM (L), DAVID BENT(P), MEGAN VERRAN(B), ANDREW VERRAN(B), *ASSIST COACH* LARRY BENT(P) AND *COACH* RON RUGGLES(L)

FRONT ROW: MANAGER DALE JOLLYMORE(L), DANIEL MCNEIL(B), CORY BENT(P), ANDREW GEORGE(L), ROB GILLIS(P), SCOTT TOOLE(B), KIRK SPICER(B), MATTHEW JOLLYMORE(L), RYAN RUGGLES(L)

(Note:The boy in the front row was David Viana, known as Cheech. He was from Brazil on exchange and was the unofficial mascot. He tragically died a year later in Brazil in a car crash.)

~~~~~